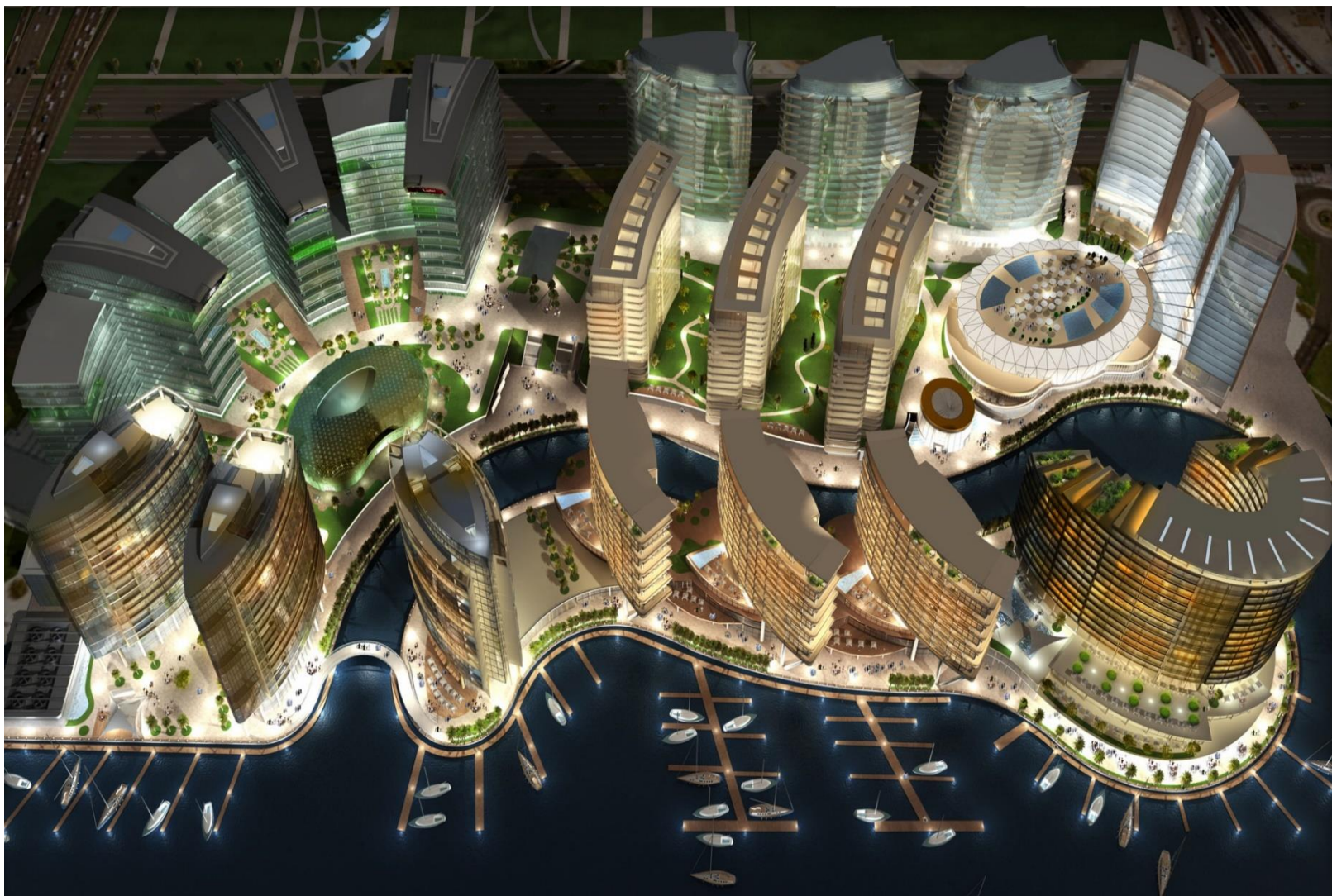


JEWEL OF THE CREEK DUBAI, UAE



JEWEL OF THE CREEK DUBAI, UAE



Quick Facts

- 17 high-rise buildings
- Man-made island with 5-star hotel (4B+G+2P+14) and 4 buildings of serviced apartments
- 4*, 3* hotels and serviced apartments - total 1,200 keys
- 1500 residential apartments
- 1000 offices
- Events area for 2000 people
- Waterfront promenade and marina for 80 berths
- 4 foot bridges and 1 vehicular bridge connecting man-made island with the main development plot
- Sports and recreation centre
- Longest swimming pool in Dubai
- 6400 parking spaces
- Design and construction of temporary cofferdam
- 4 basements with 12,000 piles designed for tension and compression



PROJECT DETAILS

1. Using 18216 KNX devices
2. Devices are from 7 different KNX manufacturer including :
 - ABB
 - Netx Automation
 - Controltronix
 - Steinel
 - Armiti
 - Elka
 - Voka
3. Running 840 separate KNX Networks under IP system (IP per panel)
4. Installing a complete KNX-IP secure network
5. Spending 17000 Manhour for supervision and Testing and commissioning
6. Running a complete integration between KNX and :
 - Zigbee under access control system
 - BMS through BACnet server
 - PMS (with micros fidelio)
 - IOT (using Cloud base IP gateway)

PROJECT DETAILS

7. running more than 7 different application including

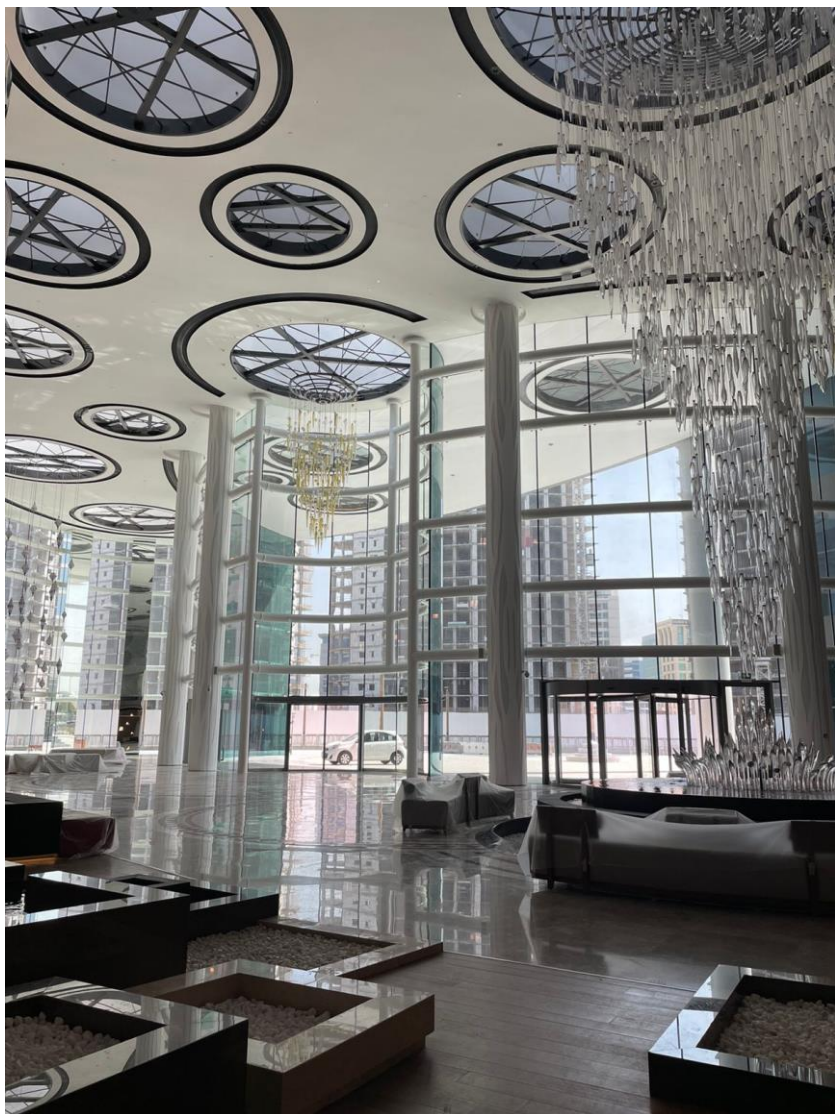
- Lighting with:
 - Switching
 - Phase dimming
 - DALI
 - DMX
- HVAC
- Day and night Curtain
- Courtesy using natural light through brightness sensors
- Night light management (less energy and proper ambient with special night lights)
- Integration with other protocols
- Guest presence control

8. As per calculation, Project can save up to 17% of energy inside building with proper system and sequence of operation.

ADVANTAGES OF KNX IN THIS PROJECT

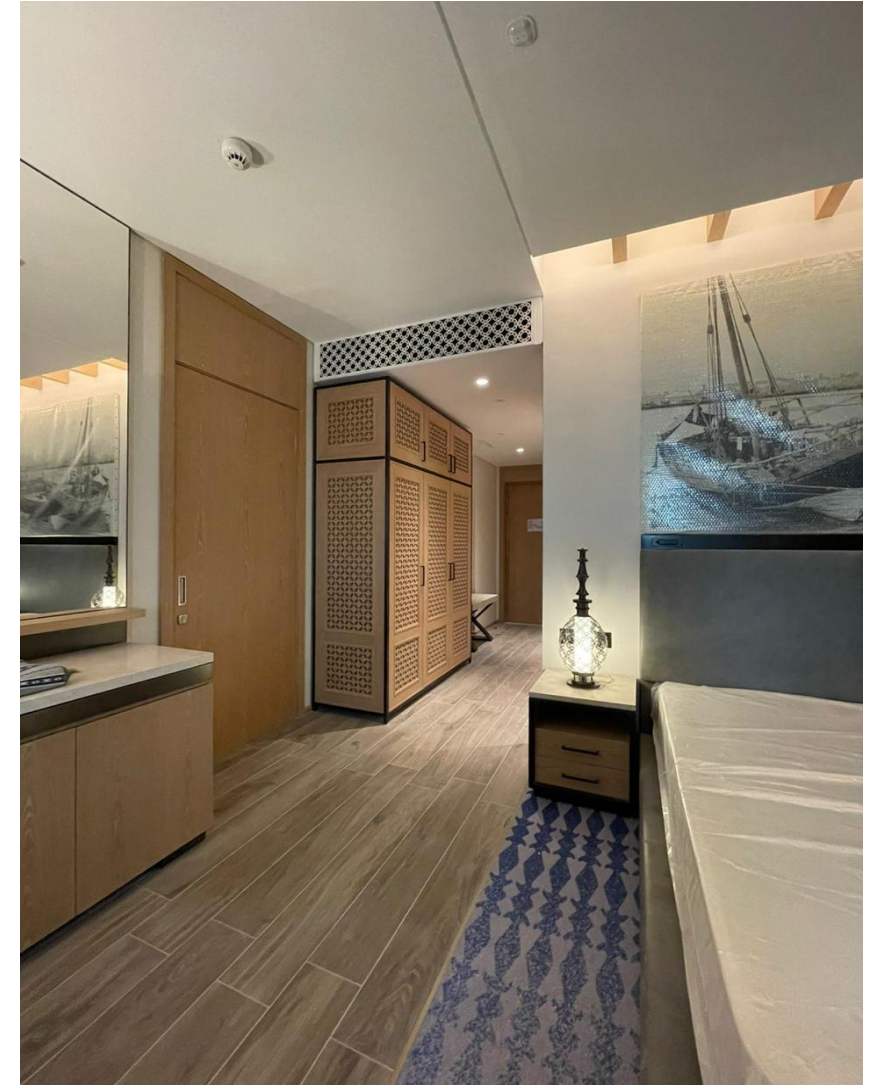
1. Increased flexibility
2. A safe system for everyone
3. Energy efficiency
4. KNX stands for comfort, safety and ease
5. Freedom of design
6. Timesaving
7. Ambient light management
8. Integration with access control
9. Integration with BMS
10. Integration with PMS
11. Integration with Fire alarm system (ALL AC's goes off and public lights on)
12. Having KNX secure
13. Courtesy control
14. Occupancy management for safety and back of house
15. Controlling light is all corridors, parking areas and lobby
16. Controlling all DMX and DALI moving lights in the main lobby .

Description: Integration with DALI and DMX and using brightness sensor in different areas



Description: Combination of Motion sensor, outside and inside brightness value and floor occupancy for controlling lights





Description: Adding night lights + Motion sensors + timer for giving a proper light during the night when the guest uses bathroom



Description: Combination between timer, outside light for controlling black out and day curtain for each window (controlling energy through outside light and the energy of sun).



Description: Using switches with proximity sensor for guest comfort





Description: Integration between KNX and access control system trough Zigbee in room level

THANK YOU!

Armiti Trading LLC

Address: Dusseldorf Business Point Office 406, Al Barsha 1, Dubai, UAE

Contact: +971 4 4328525